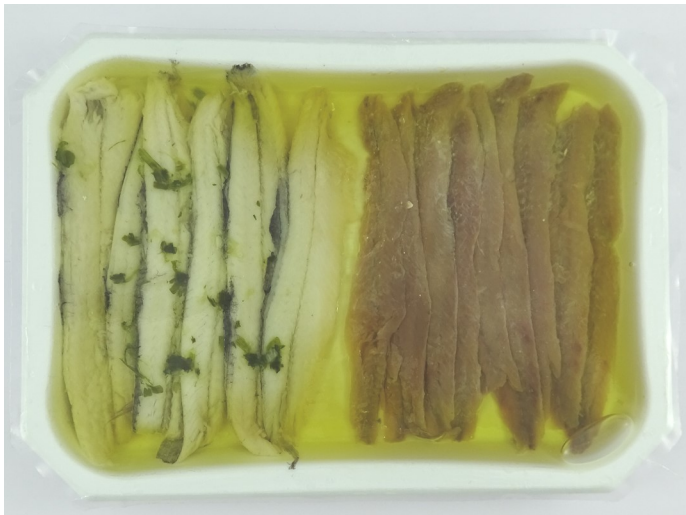


VISIO TRAY

Online Inspection of packaging trays and thermoformed containers



Benefits

Improved quality of vision—allows a high level of consistency and integrity.

Increase productivity : fully automatic packaging.

Manage global traceability :

- Registration of all production data
- Accountants and production statistics

Cost Reduction : elimination of manual operations and returns expensive products.

Protection of brand image products.

Applications

Thermoformed trays, sealed, vacuum packed bags, bundles various packages in blister.

For Meat products, seafood, prepared foods, cheese, fruits and vegetables, Pasta...



ORIENTING

INSPECTING

REJECTING

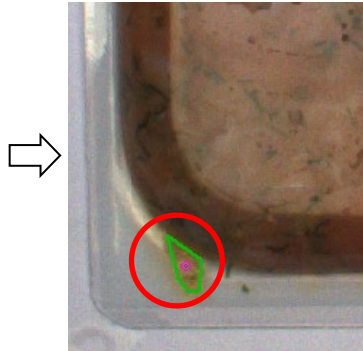
ANY KIND OF EMPTY OR FULL BOTTLES AND CONTAINERS

Fully automatic control package

Control different types of problems that can affect the trays

Seal inspection

- Presence of substance / filaments in the seal
- The appearance of the seal (Folds, wrinkles, bubbles ...)



Pack inspection

- Dimensions, damaged or deformed.
- Defective position of the top film.

Label Inspection

- Presence of the label.
- Checking the position and orientation.
- Recognition of labels.
- The absence of folds or wrinkles.
- Proofreading of legal information:
 - Bar Code
 - Weight / Price
- Unusual differences on the label.



Estudis Electro-Mecànics s.l.

C/ Pau Vila i Dinarés,10
08192 Sant Quirze del Vallès - Barcelona
SPAIN

Phone. (+34) 93 720 85 40
Fax. (+34) 93 720 85 25
comercial@e2m.es
www.e2m.es

E2M also designs custom systems to accommodate specific needs of each client.
Data subject to modification without prior notice, according to technical advance and product development.