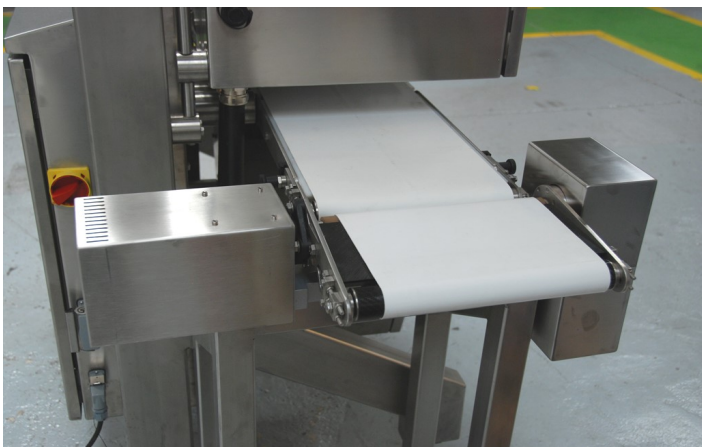


VISIOSLICED

Inspection by Vision artificial for slices arranged in tray.



ORIENTING

INSPECTING

REJECTING

ANY KIND OF EMPTY OR FULL BOTTLES AND CONTAINERS

Inspection of borders, labels, print, barcode reading and general appearance.

Description

- Maximum capacity process: 300 trays / min.
- Area inspection: adaptable to the tray format.
- Number maximum of programs (formats): infinite.
- Number maximum of analysis (windows): infinite.
- Formats change instantly.

Typical inspections

Tray general inspection

- General measures.
- Stamping or cuts on the contour, cracks.
- Significant deformation of its outline.
- Pieces of material surplus, uncut completely.

Closure film inspection

- Presence.
- Identification, according to models.
- Integrity.
- X Y positioning of the film relative to the tray or container according to the models.
- Important marks on the surface.

Welding inspection

- Error on the welding continuity.
- Product presence on the weld zone.
- Folds Identification (cannulas or).
- Bubbles identification on the weld region.

Printing and markings (on labels or on film)

- Barcodes verification.
- Reading of significant figures.
- Reading of differentiated impressions such as "gluten free".

- In the case of printed information such as the price per kilo, weight, price, one can check the concordance.
- Checking colour markings, such as consumption date limit.

Label inspection

Presence, position, orientation, identification, markings, tearing, on both sides of the container, front and back.

Inspection of Product presence in welding zone

Presence, area occupied distribution or repartition, identification (product correlated with the label or film).

Rejection

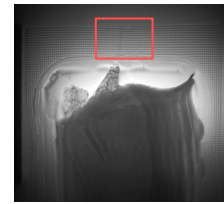
Rejection system for trays with food content or thermoformed.

Product ejection by:

- Air blast system
- Deviation on conveyor
- Rejection of conveyor



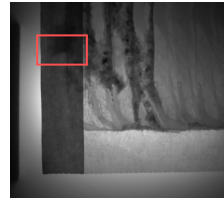
Seal Breached



Seal Breached



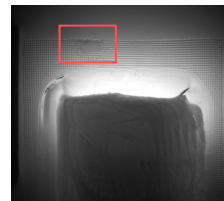
Product



Product



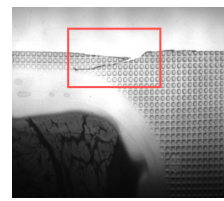
Fat



Fat



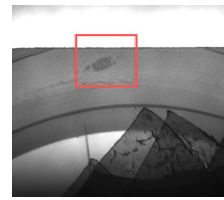
Cut on the contour



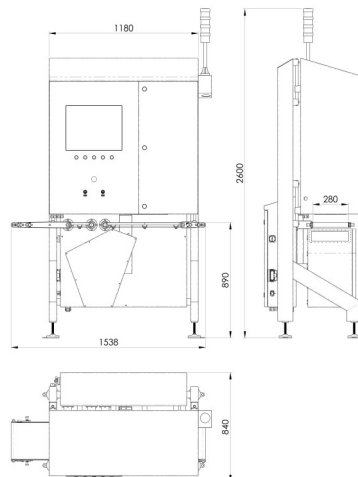
Cut on the contour



Bubble



Bubble



Label and barcode



Estudis Electro-Mecanics s.l.
 C/ Pau Vila i Dinarés, 4-10
 08192 Sant Quirze del Vallès -
 Barcelona
 ESPAGNE
 Tel. (+34) 93 720 85 40
 Fax. (+34) 93 720 85 25
 export@e2m-controlvision.com

*E2M also designs custom systems to accommodate specific needs of each client.
 Data subject to modification without prior notice, according to technical advance and product development.*