

VISIO CAN-END

Quality Control for all types of preserved food cans

Suitable for all types of cans: Octavillo, Dingley, Hansa.

Installation without mechanical modification.

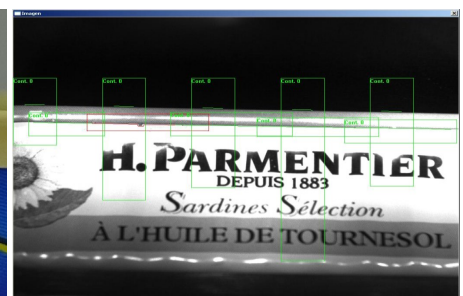
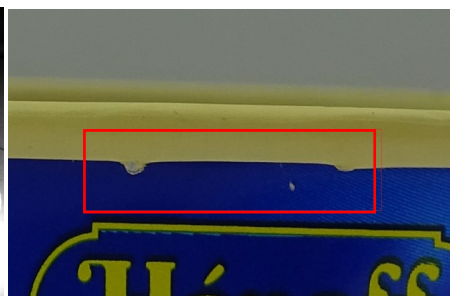
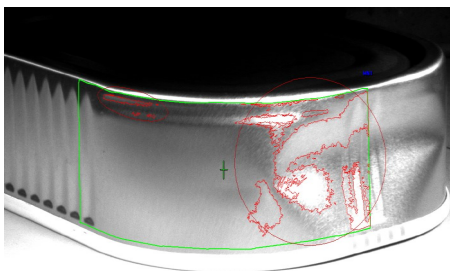
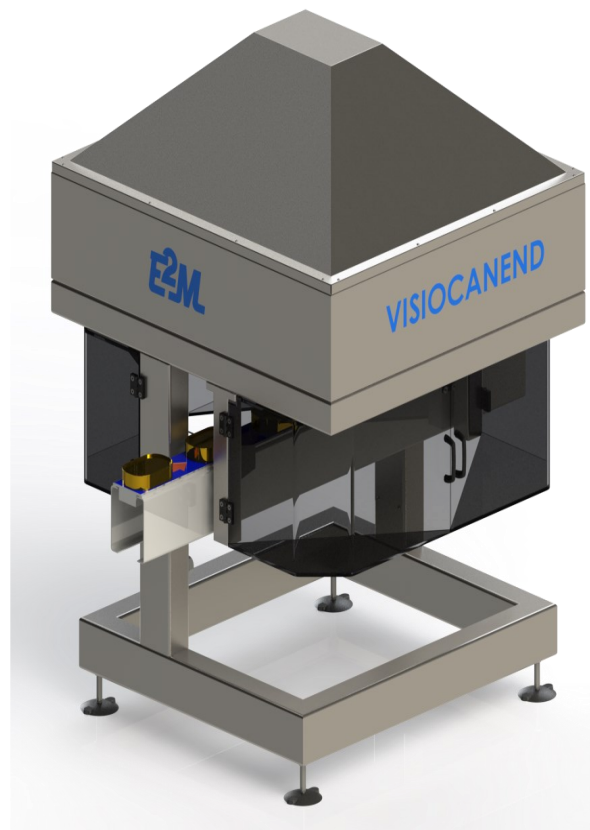
Inspection for :

External seaming defects:
Droops, spurs, mis-chucks,
knocked-down flange, cut
over, cut-down flange,
pleats.

Coding-Presence and OCV

Defects detection up to 0,5
mm.

Up to 600 units/mn.



ORIENTING

INSPECTING

REJECTING

ANY KIND OF EMPTY OR FULL BOTTLES AND CONTAINERS

Quality control for tin can and preserved food can

Up to 7 high resolution cameras for the inspection

General Description :

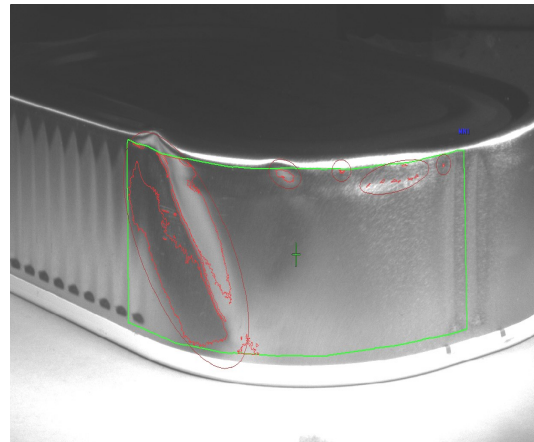
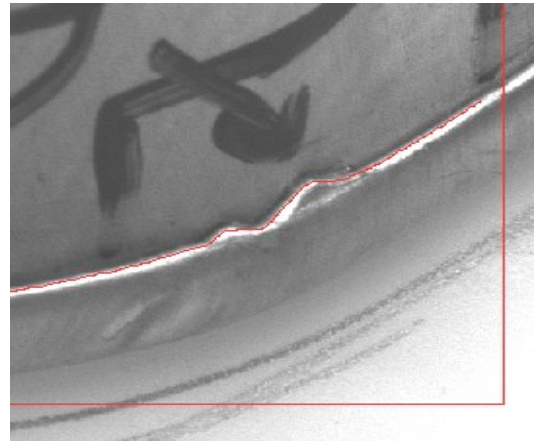
Image capture of 100% of the perimeter of the cans. The visual aspect of the sealing, serigraphy and other aspects of each can produced.

Inspection of :

- Veels.
- Holes and Thightness.
- Blows.
- Deformations.
- Codification .
- Oxidation .
- Serigraphy and scratches.

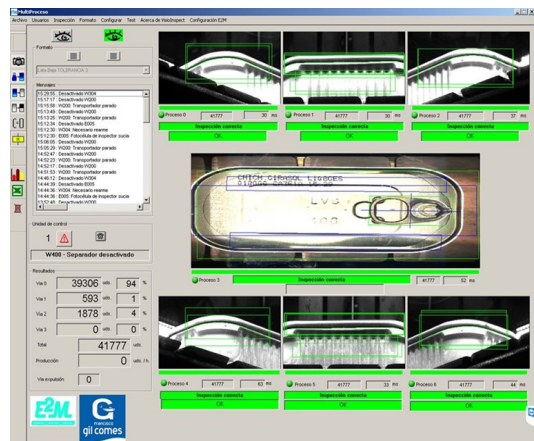
Caracteristics :

- Stainless Steel Inspection unit, IP67.
- Automatic height adjustment .
- Up to 7 high resolution cámaras.
- Infrared LED lights .
- Remote Control.
- Inte Core Pentium i7.
- Windows interface Win 7.
- Production statistics Module.
- Reject Verification.
- 17" touch screen monitor.



Advantages and benefits

- In-line Inspection of the complete production.
- False reject ratio = 0.
- User friendly interface.
- Inspection accuracy is adjustable by the user.
- Automatic format changes
- Production statitics with defects location.
- Up to 600 units/min.
- No influence of color change or serigraphie thanks to the use of infra red light.
- Sin influencia de cambio de color o serigrafía gracias a la utilización de luz infra roja.



Estudis Electro—Mecanics s.l.

C/ Pau Vilà i Dinarés, 4-10
08192 Sant Quirze del Vallès - Barcelona
ESPAÑA

Tel. (+34) 93 720 85 40
Fax. (+34) 93 720 85 25
export@e2m-controlvision.com
www.e2m-controlvision.com

E2M adapta sus soluciones para dar respuesta a necesidades específicas de cada cliente. Especificaciones sujetas a modificaciones sin previo aviso y por evolución técnica de los productos.