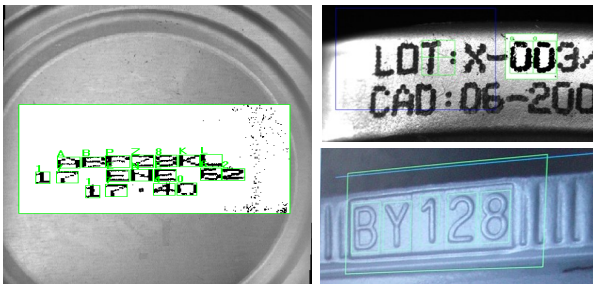


VERIFITEXT

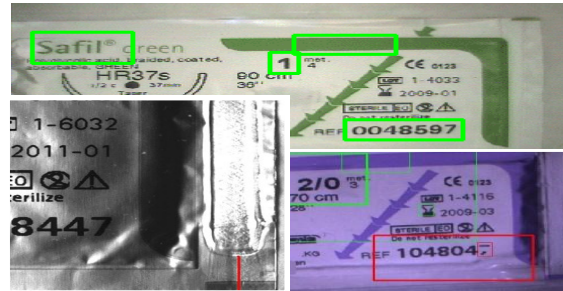
VERIFICATION OF MARKED CODES & LOTS.
ALL KIND OF MARKINGS, ALL KIND OF CODES



Lot and Date code verification on caps & cans



Code verification on medical pouches



Code verification on barcodes



ORIENTING

INSPECTING

REJECTING

ANY KIND OF EMPTY OR FULL BOTTLES AND CONTAINERS

Inspection of marked codes on cans & other containers

Machine vision for in-line & real time inspection of 100% of the production

As a can passes through the inspection enclosure, the system gets a high resolution image of the marked surface. Bad marked units are detected and rejected.

General description

Turnkey in-line solution assembled over an existing conveyor for inspection of marked containers:

- strategy:
 - machine vision: image of the marked surface
 - inspection: 100% of the units produced, without physically handling them
- technical approach:
 - ink jet printing, ink pad, thermal transference, laser...
 - (optional) pneumatic rejection of defective units
- inspection:
 - applies to visually detectable marked codes
 - All kind of codes and text: lot, date, EAN codes, Data-Matrix codes

Canning line:

- high performance lines
- constant flow of inspected cans

Structural features

Camera and lightning system in a stainless steel enclosure (as well as a container detector) .

PC and Control Rack (with electronics cards plugging created by E2M, with the power supply, CPU and others I/O modules of input/output for the signals treatment, and managing, computer with a video acquisition card to capture images, Ethernet card, a 17" TFT screen and trackball keyboard

- in-line, freestanding, turnkey system:
 - vibration free conveyor w/ modular slat
 - reject-confirmation system (optional)
- easy installation over existing conveyor

Optical design:

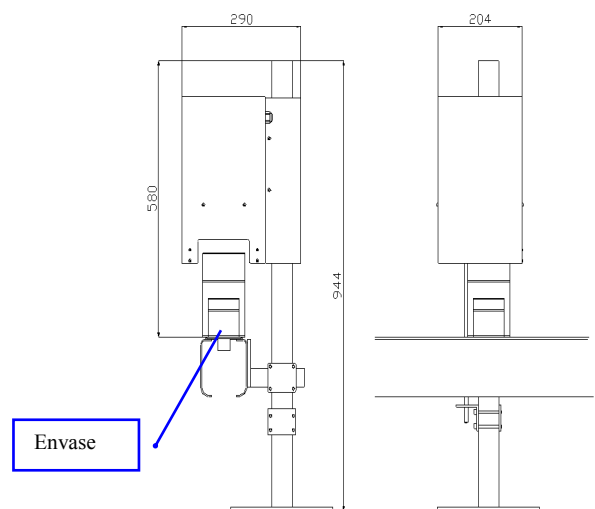
- Compatibility with:
 - different products and design patterns
 - a range of different cans

Electronic features.

- Maximum production 800 cpm. 48.000 cph
- Conveyor high speed 3m/s
- 1 Camera B/W CCD 1296x964,
- Images acquisition card for PCI bus, Euresys, Imaging or the most convenient.
- LED based front light: adjustable intensity
- Modem, USB, Ethernet, dial-in
- Intel Dual-Core Pentium D
- WinXP based user interface

Benefits and advantages

- In-line inspection of :
 - 100% of the production units
 - non destructive
 - free of physical can handling
- False accepts ratio is near 0
- User friendly interface
- Easy to parameterize
- Inspection accuracy is adjustable by the user
- Only basic training required
- Easy and quick format changeover
- Remote control (Ethernet)
- Online Remote Service from E2M
- Production statistics
- Management of rejection and upstream signals



Estudis Electro-Mecànics s.l.

C/ Pau Vila i Dinarés, 4-10
08192 Sant Quirze del Vallès - Barcelona
SPAIN
Telf. (+34) 93 720 85 40
Fax. (+34) 93 720 85 25
export@e2m-controlvision.com
www.e2m-controlvision.com



*E2M also designs custom systems to accommodate specific needs of each client.
Data subject to modification without prior notice, according to technical advance and product development.*